

STAN 10

LAMELA 2

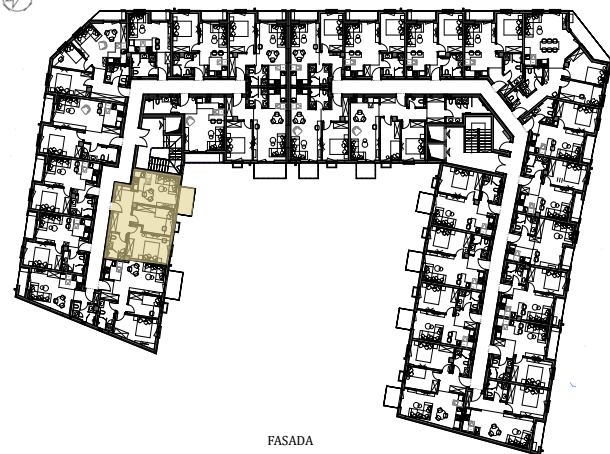
Stan 10

Trosoban

58.41m²

| | DIMENZIJE | DIMENSIONS |
|-------------------------------|---------------------|------------|
| Površina Stana Apartment Area | 53.93m ² | |
| Površina Terase Terrace Area | 4.48m ² | |
| Ukupna Površina Total Area | 58.41m ² | |

POLOŽAJ STANA U OBJEKTU
(KEY PLAN)



FASADA
(KEY FACADE)

