

# STAN 18

## LAMELA 1

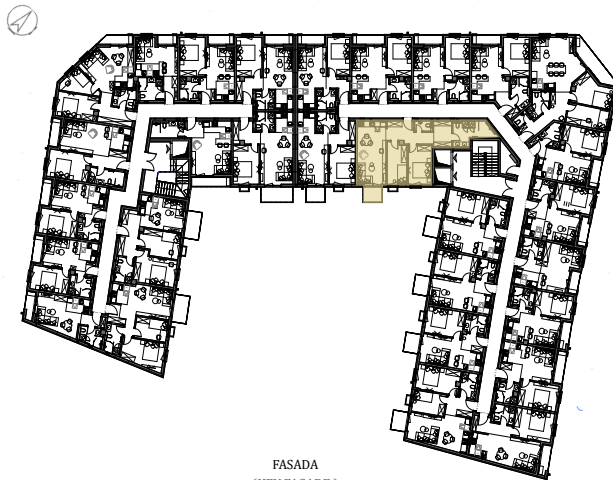
Stan 18

Trosoban

67.22m<sup>2</sup>

	DIMENZIJE DIMENSIONS
Površina Stana Apartment Area	64.07m <sup>2</sup>
Površina Terase Terrace Area	3.15m <sup>2</sup>
Ukupna Površina Total Area	67.22m <sup>2</sup>

POLOŽAJ STANA U OBJEKTU  
(KEY PLAN)



FASADA  
(KEY FACADE)

